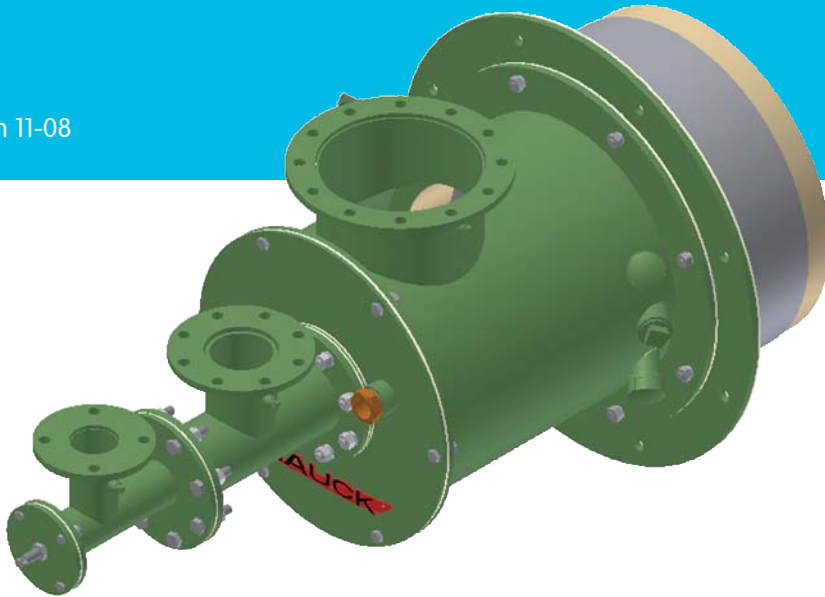


# BBC

## Multi-fuel Combination Beta Burner

BBC-1  
Edition 11-08



Hauck, a product brand  
of the Elster Group



- Designed for low pressure air operation
- Rugged heavy gauge steel construction
- Converging tile provides higher velocity flames for higher convective heat transfer
- Diverging tile permits ignition from hot furnace
- UV flame supervision
- Preheated air versions up to 900°F (480°C)
- Custom packaged versions available with air and fuel manifolds
- Broad range of air/fuel ratios
- Available with refractory or alloy tile
- Compressed air atomization option for heavy fuel oils
- Liquid propane option available

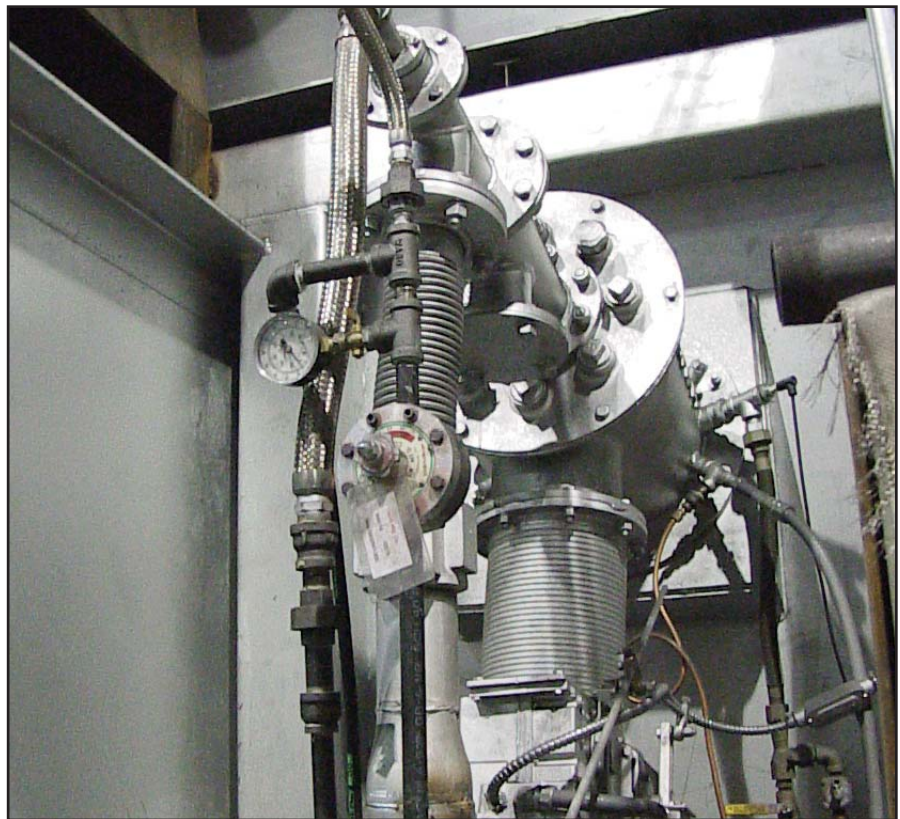
Hauck's BBC Multi-fuel Combination Beta Burner is designed for exceptionally long life in continuous or intermittent operation in furnace, kiln and dryer environments. Its low pressure air operation makes it ideal for a wide range of applications including steel reheat and aluminum furnaces, rotary kilns, gypsum kettles, air heaters and incinerators. The BBC is well suited for applications operating under backpressure. Burner capacities range from 2.5 million to more than 100 million Btu/hr (730 to 29,300 kW). The burner is designed to operate with all types of industrial fuel oils, including heavy oils, and with any clean industrial fuel gas with a higher heating value of 500 Btu/scf (19.7 MJ/nm<sup>3</sup>) or greater with ambient or preheated combustion air. The flame shapes of the BBC are well defined throughout the burner's operating range.

Available with stainless steel or refractory baffle with application temperatures of 2000°F (1090°C) and 2800°F (1540°C) respectively. The 1100 and 2100 series can operate with air preheat temperatures up to 600°F (315°C). The 3100 series can operate with air preheat temperatures up to 900°F (480°C).

On ratio turndown varies depending on fuel type, and higher thermal turndown is possible with excess air firing. Nominal burner air supply pressure is 8 osig (34.5 mbar). 16 osig primary air pressure (69 mbar) is recommended for No. 2 oil. Nominal natural gas supply pressure is 4 osig (17.25 mbar).

The burner can be supplied with a self supporting tile for soft wall applications. For hard refractory installations, a self supporting tile or a mandrel for pouring on a burner port can be supplied. Consult Hauck for mounting options.

All burners are ignited by a spark ignited gas pilot and utilize UV flame supervision. Diverging tile designs can be ignited from a hot furnace.



**Aluminum Furnace with Beta Burner  
Firing Heavy Oil**

For additional information on this product, visit our website at:

[www.hauckburner.com](http://www.hauckburner.com)

Hauck Manufacturing Company  
POB 90  
Lebanon, PA 17042

T +1 717-272-3051  
F +1 717-273-9882  
[info@hauckburner.com](mailto:info@hauckburner.com)

Hauck, a product brand  
of the Elster Group



Copyright © 2008 Elster Group